

Appendix 5: OWNERSHIP OF PROPERTIES FOR INCLUSION IN HIGH ROAD WEST

SECTION 1 – HRA PROPERTIES

Composition of homes on the Love Lane estate (August 2017) is summarised as follows and represent HRA ownership in relation to the High Road West scheme. Properties in the General Fund and acquired for Planning purposes are included in section 2 below. Reference numbers refer to the Land Referencing plan at the end of this appendix.

Composition of Homes by ownership / tenure

Resident Leaseholder	31
Non-resident leaseholder	45
Secure tenant	65
Temporary Accommodation (Council owned)	156
TOTAL	297

In addition to this, the HRA portfolio includes the following properties within the High Road West scheme.

- Coombes Croft Library
- Car parking including garages adjacent to 3 Whitehall Street
- Love Lane estate 'grounds'
- British Queen PH and adjoining residential unit at 21 Love Lane
- Southern edge of garages on Love Lane (that area of garages not already approved for transfer as part of White Hart Lane station)

Homes and other HRA land is included below, with a detailed breakdown of units by tenure included below this.

LB Haringey land included in referencing for the High Road West Scheme– excluding public highway

Plot No	Description in land referencing schedule	Current Use	Statutory powers under which land held	Consultation
97	Residential premises (9 to 39 (odd) White Hart Lane) part of:- (Title Number: MX321986)	16 flats (tenants and long lessees)	HRA – residential block	2015 Masterplan including s105. 2017 Ownership including s.105
117	Residential premises (Charles House, Love Lane) part of:- (Title Number: MX321986)	60 flats (tenants and long lessees))	HRA – residential block + amenity land	2015 Masterplan including s105. 2017 Ownership including s.105
119	Residential premises (Moselle House, 1 to 60 Moselle Street) part of:- (Title Number: MX321986)	60 flats (tenants and long lessees)	HRA – residential block	2015 Masterplan including s105. 2017 Ownership including s.105
121	Land, residential premises, (2 -32 (even) Whitehall Street and Ermine House) part of:- (Title Numbers: NGL224482 & MX321986)	76 flats (tenants and long lessees))	HRA – residential block + amenity land	2015 Masterplan including s105. 2017 Ownership including s.105

138	Coombes Croft Library and residential premises (1 to 19 Kathleen Ferrier Court, Brereton Road) <i>(Title Number: NGL224482)</i>	Library & 19 flats (tenants and long lessees)	HRA	2015 Masterplan including s105. 2017 Ownership including s.105
139	Residential premises (4 to 18 (even) Brereton Road) <i>(Title Number: MX227110)</i>	9 flats (tenants and long lessees)	HRA	2015 Masterplan including s105. 2017 Ownership including s.105
140	Land (west of 4- 18 (even) Brereton Road and south of 31 to 61 Whitehall Street) <i>(Title Numbers: MX412906; MX410474; MX338406; MX282512; MX27965 & MX467646)</i>		HRA	2015 Masterplan including s105. 2017 Ownership including s.105
143	Car park, pathways and residential premises (2 to 28 (even) Orchard Place and part of 63 to 89 (odd) Whitehall Street) <i>(Title Numbers: AGL158913 & MX219994)</i>	Car Park & 28 flats (tenants and long lessees, including Newlon Housing Trust)	HRA	2015 Masterplan including s105. 2017 Ownership including s.105
144	Access way, car park and footbridge (west of 2 to 28 (even) Orchard Place) <i>(Title Number: MX475360)</i>		HRA	2015 Masterplan including s105.

145	Land and car park (west of 2 to 28 (even) Orchard Place) <i>(Title Number: MX479263)</i>		HRA	2015 Masterplan including s105.
147	Car park and land (north of 63 to 89 (odd) Whitehall Street) <i>(Title Number: NGL30731)</i>		HRA	2015 Masterplan including s105.
151	Footway and part of residential premises (63 to 89 (odd) Whitehall Street) <i>(Title Number: NGL224482)</i>	(residential part =plot 143)	HRA	2015 Masterplan including s105. 2017 Ownership including s.105
152	Footway and residential premises (3 to 61 (odd) Whitehall Street) <i>(Title Number: MX467643)</i>	30 flats (tenants and long lessees)	HRA	2015 Masterplan including s105. 2017 Ownership including s.105
153	Garages (east side 3 Whitehall Street) <i>(Title Number: MX471871)</i>		HRA	2015 Masterplan including s105.
157	Land, garages and residential premises (21 Love Lane) <i>(Title Number: MX321986)</i>	Public House Residential	HRA	2015 Masterplan including s105. 2017 Ownership including s.105

172	Access way and private car parking spaces (31 Headcorn Road) <i>(Title Number: MX34149)</i>		HRA	2015 Masterplan including s105.
-----	--	--	-----	---------------------------------

Breakdown of Units on Love Lane Estate

The breakdown of these ownership / tenures is indicated below, with individual properties shown.

RESIDENT LEASEHOLDERS

12 Brereton Road	London	N17 8BY	Leaseholder	YES
18 Brereton Road	London	N17 8BY	Leaseholder	YES
10 Kathleen Ferrier Court, Brereton Road	London	N17 8BY	Leaseholder	YES
14 Kathleen Ferrier Court, Brereton Road	London	N17 8BY	Leaseholder	YES
15 Kathleen Ferrier Court, Brereton Road	London	N17 8BY	Leaseholder	YES
18 Kathleen Ferrier Court, Brereton Road	London	N17 8BY	Leaseholder	YES
7 Kathleen Ferrier Court, Brereton Road	London	N17 8BY	Leaseholder	YES
4 Kathleen Ferrier Court, Brereton Road	London	N17 8BY	Leaseholder	YES
47 Ermine House, Moselle Street	London	N17 8DE	Leaseholder	YES
18 Ermine House, Moselle Street	London	N17 8DE	Leaseholder	YES
30 Ermine House, Moselle Street	London	N17 8DE	Leaseholder	YES
6 Orchard Place	London	N17 8BH	Leaseholder	YES
12 Orchard Place	London	N17 8BH	Leaseholder	YES
14 Orchard Place	London	N17 8BH	Leaseholder	YES
16 Orchard Place	London	N17 8BH	Leaseholder	YES
28 Orchard Place	London	N17 8BH	Leaseholder	YES
27 White Hart Lane	Tottenham, London	N17 8DU	Leaseholder	YES
29 White Hart Lane	Tottenham, London	N17 8DU	Leaseholder	YES
31 White Hart Lane	Tottenham, London	N17 8DU	Leaseholder	YES
4 Whitehall Street	London	N17 8BP	Leaseholder	YES
11 Whitehall Street	London	N17 8BP	Leaseholder	YES
31 Whitehall Street	London	N17 8BP	Leaseholder	YES
39 Whitehall Street	London	N17 8BP	Leaseholder	YES
43 Whitehall Street	London	N17 8BP	Leaseholder	YES
63 Whitehall Street	London	N17 8BP	Leaseholder	YES
77 Whitehall Street	London	N17 8BP	Leaseholder	YES
85 Whitehall Street	London	N17 8BP	Leaseholder	YES
3 Moselle House, William Street	London	N17 8DD	Leaseholder	YES
33 Moselle House, William Street	London	N17 8DD	Leaseholder	YES
51 Moselle House, William Street	London	N17 8DD	Leaseholder	YES
60 Moselle House, William Street	London	N17 8DD	Leaseholder	YES

NON-RESIDENT LEASEHOLDERS

4 Brereton Road	London	N17 8BY	Leaseholder	NO
6 Brereton Road	London	N17 8BY	Leaseholder	NO
10 Brereton Road	London	N17 8DA	Leaseholder	NO
13 Kathleen Ferrier Court, Brereton Road	London	N17 8BY	Leaseholder	NO
8 Kathleen Ferrier Court, Brereton Road	Tottenham, London	N17 8BY	Leaseholder	NO
6 Kathleen Ferrier Court, Brereton Road	London	N17 8BY	Leaseholder	NO
1 Charles House, Love Lane	London	N17 8DB	Leaseholder	NO
11 Charles House, Love Lane	London	N17 8DB	Leaseholder	NO
19 Charles House, Love Lane	London	N17 8DB	Leaseholder	NO
30 Charles House, Love Lane	London	N17 8DB	Leaseholder	NO
32 Charles House, Love Lane	London	N17 8DB	Leaseholder	NO
37 Charles House, Love Lane	London	N17 8DB	Leaseholder	NO
21 Charles House, Love Lane	Tottenham, London	N17 8DB	Leaseholder	NO
3 Ermine House, Moselle Street	Tottenham, London	N17 8DE	Leaseholder	NO
15 Ermine House, Moselle Street	London	N17 8DE	Leaseholder	NO
17 Ermine House, Moselle Street	London	N17 8DE	Leaseholder	NO
24 Ermine House, Moselle Street	London	N17 8DE	Leaseholder	NO
4 Orchard Place	London	N17 8BH	Leaseholder	NO
10 Orchard Place	London	N17 8BH	Leaseholder	NO
24 Orchard Place	London	N17 8BH	Leaseholder	NO
26 Orchard Place	London	N17 8BH	Leaseholder	NO
15 White Hart Lane	Tottenham, London	N17 8DU	Leaseholder	NO
21 White Hart Lane	Tottenham, London	N17 8DU	Leaseholder	NO
23 White Hart Lane	Tottenham, London	N17 8DU	Leaseholder	NO
87 Whitehall Street	Tottenham, London	N17 8BP	Leaseholder	NO
19 White Hart Lane	Tottenham, London	N17 8DU	Leaseholder	NO
2 Whitehall Street	London	N17 8BP	Leaseholder	NO
3 Whitehall Street	London	N17 8BP	Leaseholder	NO
7 Whitehall Street	London	N17 8BP	Leaseholder	NO
10 Whitehall Street	London	N17 8BP	Leaseholder	NO
13 Whitehall Street	London	N17 8BP	Leaseholder	NO
14 Whitehall Street	London	N17 8BP	Leaseholder	NO

15 Whitehall Street	London	N17 8BP	Leaseholder	NO
16 Whitehall Street	London	N17 8BP	Leaseholder	NO
17 Whitehall Street	Tottenham, London	N17 8BP	Leaseholder	NO
18 Whitehall Street	London	N17 8BP	Leaseholder	NO
27 Whitehall Street	London	N17 8BP	Leaseholder	NO
30 Whitehall Street	London	N17 8BP	Leaseholder	NO
51 Whitehall Street	London	N17 8BP	Leaseholder	NO
57 Whitehall Street	London	N17 8BP	Leaseholder	NO
61 Whitehall Street	London	N17 8BP	Leaseholder	NO
67 Whitehall Street	London	N17 8BP	Leaseholder	NO
81 Whitehall Street	London	N17 8BP	Leaseholder	NO
42 Moselle House, William Street	Tottenham, London	N17 8DD	Leaseholder	NO
39 Moselle House, William Street	London	N17 8DD	Leaseholder	NO

SECURE COUNCIL TENANTS

16 Kathleen Ferrier Court, Brereton Road	London	N17 8BY	Council tenant
18 Charles House, Love Lane	London	N17 8DB	Council tenant
24 Charles House, Love Lane	London	N17 8DB	Council tenant
8 Charles House, Love Lane	London	N17 8DB	Council tenant
15 Moselle House, William Street	London	N17 8DD	Council tenant
19 Moselle House, William Street	London	N17 8DD	Council tenant
21 Moselle House, William Street	London	N17 8DD	Council tenant
33 White Hart Lane	Tottenham, London	N17 8DU	Council tenant
31 Moselle House, William Street	London	N17 8DD	Council tenant
23 Moselle House, William Street	London	N17 8DD	Council tenant
14 Moselle House, William Street	London	N17 8DD	Council tenant
36 Charles House, Love Lane	London	N17 8DB	Council tenant
22 Charles House, Love Lane	London	N17 8DB	Council tenant
58 Moselle House, William Street	London	N17 8DD	Council tenant
6 Charles House, Love Lane	London	N17 8DB	Council tenant

49 Charles House, Love Lane	London	N17 8DB	Council tenant
13 Moselle House, William Street	London	N17 8DD	Council tenant
56 Charles House, Love Lane	London	N17 8DB	Council tenant
31 Charles House, Love Lane	London	N17 8DB	Council tenant
38 Charles House, Love Lane	London	N17 8DB	Council tenant
35 White Hart Lane	Tottenham, London	N17 8DU	Council tenant
25 Charles House, Love Lane	London	N17 8DB	Council tenant
43 Charles House, Love Lane	London	N17 8DB	Council tenant
43 Moselle House, William Street	London	N17 8DD	Council tenant
2 Moselle House, William Street	London	N17 8DD	Council tenant
54 Charles House, Love Lane	London	N17 8DB	Council tenant
12 Moselle House, William Street	London	N17 8DD	Council tenant
35 Moselle House, William Street	London	N17 8DD	Council tenant
51 Charles House, Love Lane	London	N17 8DB	Council tenant
60 Charles House, Love Lane	London	N17 8DB	Council tenant
43 Ermine House, Moselle Street	London	N17 8DE	Council tenant
44 Ermine House, Moselle Street	London	N17 8DE	Council tenant
45 Ermine House, Moselle Street	London	N17 8DE	Council tenant
48 Ermine House, Moselle Street	London	N17 8DE	Council tenant
50 Ermine House, Moselle Street	London	N17 8DE	Council tenant
10 Ermine House, Moselle Street	London	N17 8DE	Council tenant
14 Ermine House, Moselle Street	London	N17 8DE	Council tenant
27 Ermine House, Moselle Street	London	N17 8DE	Council tenant
1 Ermine House, Moselle Street	London	N17 8DE	Council tenant
40 Ermine House, Moselle Street	London	N17 8DE	Council tenant
56 Ermine House, Moselle Street	London	N17 8DE	Council tenant
22 Orchard Place	London	N17 8BH	Council tenant
9 White Hart Lane	Tottenham, London	N17 8DU	Council tenant
35 Charles House, Love Lane	London	N17 8DB	Council tenant
58 Charles House, Love Lane	London	N17 8DB	Council tenant

29 Whitehall Street	London	N17 8BP	Council tenant
45 Whitehall Street	London	N17 8BP	Council tenant
49 Whitehall Street	London	N17 8BP	Council tenant
75 Whitehall Street	London	N17 8BP	Council tenant
52 Moselle House, William Street	London	N17 8DD	Council tenant
41 Charles House, Love Lane	London	N17 8DB	Council tenant
6 Moselle House, William Street	London	N17 8DD	Council tenant
30 Moselle House, William Street	London	N17 8DD	Council tenant
40 Moselle House, William Street	London	N17 8DD	Council tenant
53 Charles House, Love Lane	London	N17 8DB	Council tenant
20 Moselle House, William Street	London	N17 8DD	Council tenant
44 Moselle House, William Street	London	N17 8DD	Council tenant
10 Charles House, Love Lane	London	N17 8DB	Council tenant
17 Moselle House, William Street	London	N17 8DD	Council tenant
26 Charles House, Love Lane	London	N17 8DB	Council tenant
3 Charles House, Love Lane	London	N17 8DB	Council tenant
47 Charles House, Love Lane	London	N17 8DB	Council tenant
2 Charles House, Love Lane	London	N17 8DB	Council tenant
9 Moselle House, William Street	London	N17 8DD	Council tenant
33 Charles House, Love Lane	London	N17 8DB	Council tenant

COUNCIL TEMPORARY ACCOMMODATION TENANTS

8 Brereton Road	London	N17 8BY	TA tenant
14 Brereton Road	London	N17 8BY	TA tenant
16 Brereton Road	London	N17 8DA	TA tenant
11 Kathleen Ferrier Court, Brereton Road	London	N17 8BY	TA tenant
12 Kathleen Ferrier Court, Brereton Road	London	N17 8BY	TA tenant
17 Kathleen Ferrier Court, Brereton Road	London	N17 8BY	TA tenant

19 Kathleen Ferrier Court, Brereton Road	London	N17 8BY	TA tenant
9 Kathleen Ferrier Court, Brereton Road	London	N17 8BY	TA tenant
5 Kathleen Ferrier Court, Brereton Road	London	N17 8BY	TA tenant
3 Kathleen Ferrier Court, Brereton Road	London	N17 8BY	TA tenant
2 Kathleen Ferrier Court, Brereton Road	London	N17 8BY	TA tenant
1 Kathleen Ferrier Court, Brereton Road	London	N17 8BY	TA tenant
56 Moselle House, William Street	London	N17 8DD	TA tenant
7 Charles House, Love Lane	London	N17 8DB	TA tenant
13 Charles House, Love Lane	London	N17 8DB	TA tenant
8 Moselle House, William Street	London	N17 8DD	TA tenant
14 Charles House, Love Lane	London	N17 8DB	TA tenant
16 Charles House, Love Lane	London	N17 8DB	TA tenant
37 White Hart Lane	Tottenham, London	N17 8DU	TA tenant
27 Charles House, Love Lane	London	N17 8DB	TA tenant
28 Charles House, Love Lane	London	N17 8DB	TA tenant
34 Charles House, Love Lane	London	N17 8DB	TA tenant
41 Moselle House, William Street	London	N17 8DD	TA tenant
44 Charles House, Love Lane	London	N17 8DB	TA tenant
46 Charles House, Love Lane	London	N17 8DB	TA tenant
59 Moselle House, William Street	London	N17 8DD	TA tenant
52 Charles House, Love Lane	London	N17 8DB	TA tenant
50 Charles House, Love Lane	London	N17 8DB	TA tenant
12 Charles House, Love Lane	London	N17 8DB	TA tenant
38 Moselle House, William Street	London	N17 8DD	TA tenant
11 Moselle House, William Street	London	N17 8DD	TA tenant
55 Charles House, Love Lane	London	N17 8DB	TA tenant
45 Charles House, Love Lane	London	N17 8DB	TA tenant
28 Moselle House, William Street	London	N17 8DD	TA tenant
59 Charles House, Love Lane	London	N17 8DB	TA tenant
55 Moselle House, William Street	London	N17 8DD	TA tenant
19 Ermine House, Moselle Street	London	N17 8DE	TA tenant
23 Ermine House, Moselle Street	London	N17 8DE	TA tenant
7 Ermine House, Moselle Street	London	N17 8DE	TA tenant
41 Ermine House, Moselle Street	London	N17 8DE	TA tenant
46 Ermine House, Moselle Street	London	N17 8DE	TA tenant
49 Ermine House, Moselle Street	London	N17 8DE	TA tenant
51 Ermine House, Moselle Street	London	N17 8DE	TA tenant
52 Ermine House, Moselle Street	London	N17 8DE	TA tenant
53 Ermine House, Moselle Street	London	N17 8DE	TA tenant

54 Ermine House, Moselle Street	London	N17 8DE	TA tenant
55 Ermine House, Moselle Street	London	N17 8DE	TA tenant
57 Ermine House, Moselle Street	London	N17 8DE	TA tenant
58 Ermine House, Moselle Street	London	N17 8DE	TA tenant
59 Ermine House, Moselle Street	London	N17 8DE	TA tenant
60 Ermine House, Moselle Street	London	N17 8DE	TA tenant
2 Ermine House, Moselle Street	London	N17 8DE	TA tenant
4 Ermine House, Moselle Street	London	N17 8DE	TA tenant
5 Ermine House, Moselle Street	London	N17 8DE	TA tenant
6 Ermine House, Moselle Street	London	N17 8DE	TA tenant
8 Ermine House, Moselle Street	London	N17 8DE	TA tenant
9 Ermine House, Moselle Street	London	N17 8DE	TA tenant
11 Ermine House, Moselle Street	London	N17 8DE	TA tenant
12 Ermine House, Moselle Street	London	N17 8DE	TA tenant
13 Ermine House, Moselle Street	London	N17 8DE	TA tenant
16 Ermine House, Moselle Street	London	N17 8DE	TA tenant
20 Ermine House, Moselle Street	London	N17 8DE	TA tenant
21 Ermine House, Moselle Street	London	N17 8DE	TA tenant
22 Ermine House, Moselle Street	London	N17 8DE	TA tenant
25 Ermine House, Moselle Street	London	N17 8DE	TA tenant
26 Ermine House, Moselle Street	London	N17 8DE	TA tenant
28 Ermine House, Moselle Street	London	N17 8DE	TA tenant
29 Ermine House, Moselle Street	London	N17 8DE	TA tenant
31 Ermine House, Moselle Street	London	N17 8DE	TA tenant
32 Ermine House, Moselle Street	London	N17 8DE	TA tenant
33 Ermine House, Moselle Street	London	N17 8DE	TA tenant
34 Ermine House, Moselle Street	London	N17 8DE	TA tenant
35 Ermine House, Moselle Street	London	N17 8DE	TA tenant
36 Ermine House, Moselle Street	London	N17 8DE	TA tenant
37 Ermine House, Moselle Street	London	N17 8DE	TA tenant
42 Ermine House, Moselle Street	London	N17 8DE	TA tenant
38 Ermine House, Moselle Street	London	N17 8DE	TA tenant
39 Ermine House, Moselle Street	London	N17 8DE	TA tenant
2 Orchard Place	London	N17 8BH	TA tenant
8 Orchard Place	London	N17 8BH	TA tenant
18 Orchard Place	London	N17 8BH	TA tenant
20 Orchard Place	London	N17 8BH	TA tenant
11 White Hart Lane	Tottenham, London	N17 8DU	TA tenant
13 White Hart Lane	Tottenham, London	N17 8DU	TA tenant
17 White Hart Lane	Tottenham, London	N17 8DU	TA tenant
25 Moselle House, William Street	London	N17 8DD	TA tenant
47 Moselle House, William Street	London	N17 8DD	TA tenant

25 White Hart Lane	Tottenham, London	N17 8DU	TA tenant
45 Moselle House, William Street	London	N17 8DD	TA tenant
1 Moselle House, William Street	London	N17 8DD	TA tenant
7 Moselle House, William Street	London	N17 8DD	TA tenant
16 Moselle House, William Street	London	N17 8DD	TA tenant
54 Moselle House, William Street	London	N17 8DD	TA tenant
26 Moselle House, William Street	London	N17 8DD	TA tenant
32 Moselle House, William Street	London	N17 8DD	TA tenant
48 Moselle House, William Street	London	N17 8DD	TA tenant
49 Moselle House, William Street	London	N17 8DD	TA tenant
18 Moselle House, William Street	London	N17 8DD	TA tenant
5 Whitehall Street	London	N17 8BP	TA tenant
6 Whitehall Street	London	N17 8BP	TA tenant
8 Whitehall Street	Tottenham, London	N17 8BP	TA tenant
9 Whitehall Street	London	N17 8BP	TA tenant
12 Whitehall Street	London	N17 8BP	TA tenant
19 Whitehall Street	London	N17 8BP	TA tenant
20 Whitehall Street	London	N17 8BP	TA tenant
21 Whitehall Street	London	N17 8BP	TA tenant
22 Whitehall Street	London	N17 8BP	TA tenant
23 Whitehall Street	London	N17 8BP	TA tenant
24 Whitehall Street	London	N17 8BP	TA tenant
25 Whitehall Street	London	N17 8BP	TA tenant
26 Whitehall Street	London	N17 8BP	TA tenant
28 Whitehall Street	London	N17 8BP	TA tenant
32 Whitehall Street	London	N17 8BP	TA tenant
33 Whitehall Street	London	N17 8BP	TA tenant
35 Whitehall Street	London	N17 8BP	TA tenant
37 Whitehall Street	London	N17 8BP	TA tenant
41 Whitehall Street	London	N17 8BP	TA tenant
47 Whitehall Street	London	N17 8BP	TA tenant
53 Whitehall Street	London	N17 8BP	TA tenant
55 Whitehall Street	London	N17 8BP	TA tenant
59 Whitehall Street	London	N17 8BP	TA tenant
65 Whitehall Street	London	N17 8BP	TA tenant
69 Whitehall Street	London	N17 8BP	TA tenant
71 Whitehall Street	London	N17 8BP	TA tenant
73 Whitehall Street	London	N17 8BP	TA tenant
79 Whitehall Street	London	N17 8BP	TA tenant
83 Whitehall Street	London	N17 8BP	TA tenant
89 Whitehall Street	London	N17 8BP	TA tenant
20 Charles House, Love Lane	London	N17 8DB	TA tenant
23 Charles House, Love Lane	London	N17 8DB	TA tenant

40 Charles House, Love Lane	London	N17 8DB	TA tenant
34 Moselle House, William Street	London	N17 8DD	TA tenant
53 Moselle House, William Street	London	N17 8DD	TA tenant
4 Moselle House, William Street	London	N17 8DD	TA tenant
46 Moselle House, William Street	London	N17 8DD	TA tenant
15 Charles House, Love Lane	London	N17 8DB	TA tenant
29 Moselle House, William Street	London	N17 8DD	TA tenant
5 Moselle House, William Street	London	N17 8DD	TA tenant
39 Charles House, Love Lane	London	N17 8DB	TA tenant
57 Charles House, Love Lane	London	N17 8DB	TA tenant
22 Moselle House, William Street	London	N17 8DD	TA tenant
10 Moselle House, William Street	London	N17 8DD	TA tenant
24 Moselle House, William Street	London	N17 8DD	TA tenant
27 Moselle House, William Street	Tottenham, London	N17 8DD	TA tenant
5 Charles House, Love Lane	London	N17 8DB	TA tenant
48 Charles House, Love Lane	London	N17 8DB	TA tenant
42 Charles House, Love Lane	London	N17 8DB	TA tenant
17 Charles House, Love Lane	London	N17 8DB	TA tenant
39 White Hart Lane	Tottenham, London	N17 8DU	TA tenant
37 Moselle House, William Street	London	N17 8DD	TA tenant
29 Charles House, Love Lane	London	N17 8DB	TA tenant
9 Charles House, Love Lane	London	N17 8DB	TA tenant
50 Moselle House, William Street	London	N17 8DD	TA tenant
4 Charles House, Love Lane	London	N17 8DB	TA tenant
36 Moselle House, William Street	London	N17 8DD	TA tenant
57 Moselle House, William Street	London	N17 8DD	TA tenant

Appendix 5: OWNERSHIP OF PROPERTIES FOR INCLUSION IN HIGH ROAD WEST

SECTION 2 – GENERAL FUND AND PLANNING USE PROPERTIES

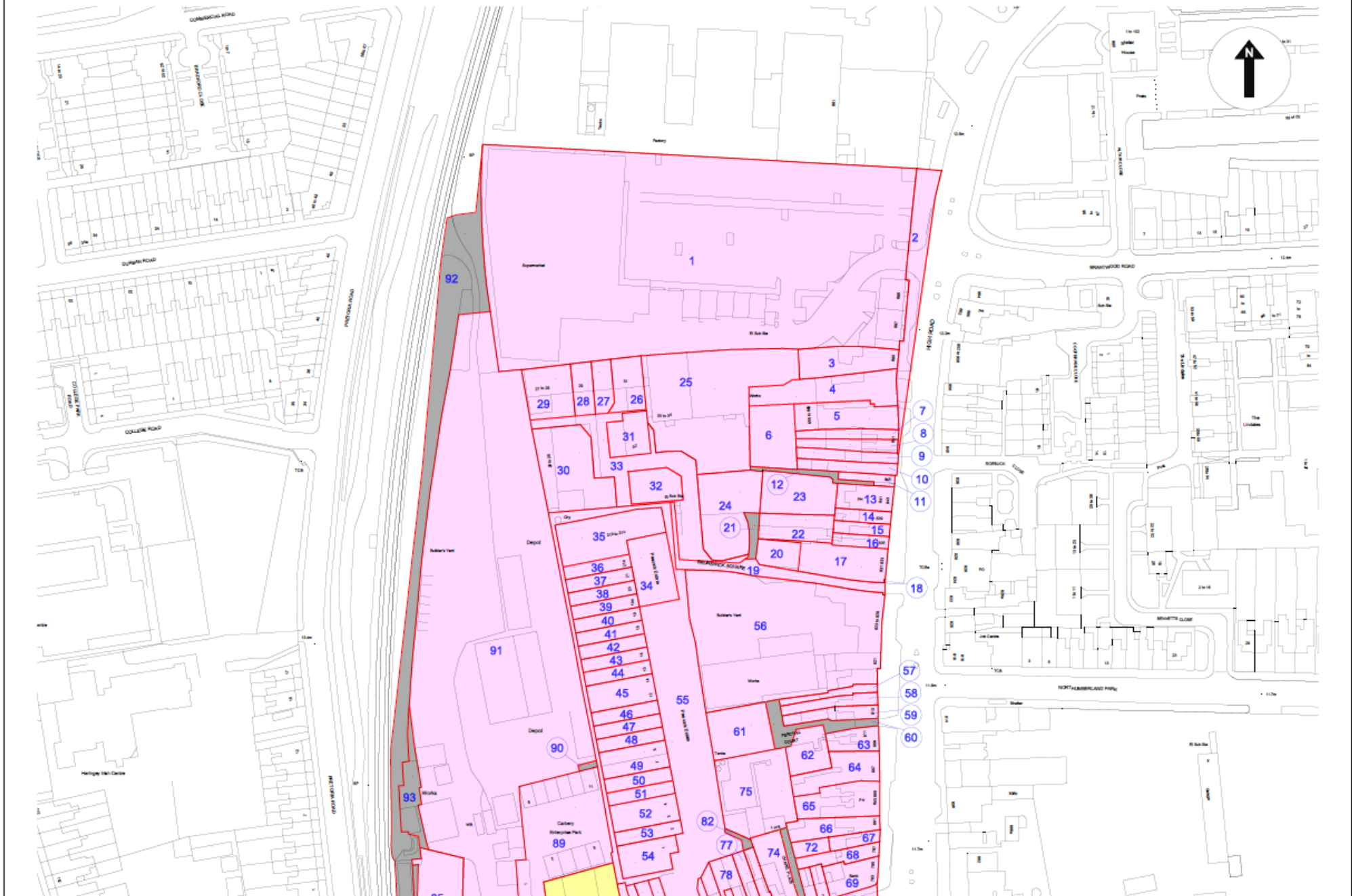
Properties included in the Haringey Council ‘General Fund’ or acquired for Planning Purposes.

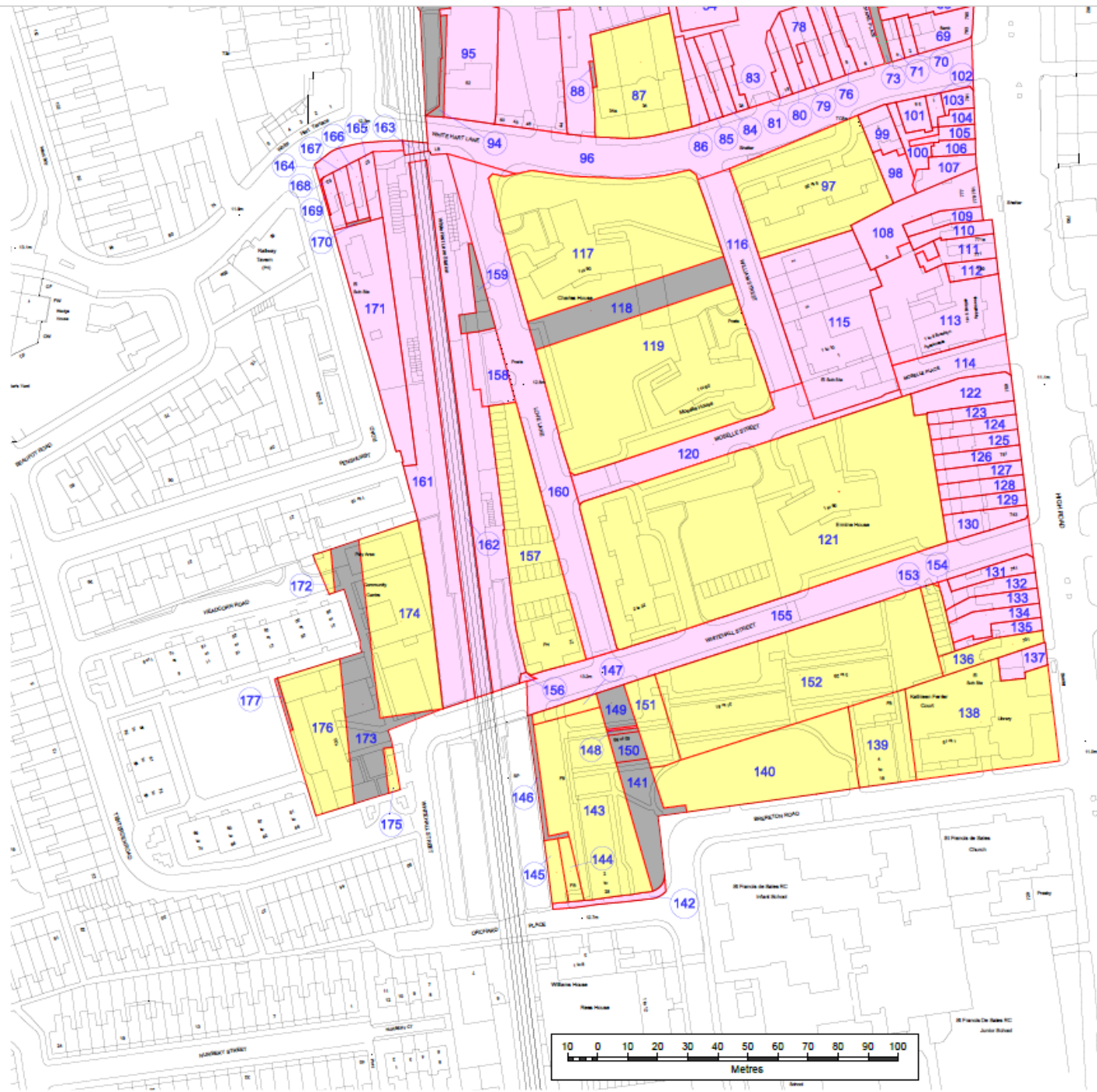
Plot No	Description in land referencing schedule	Current Use	Statutory powers under which land held	Consultation
18	1 square metres, or thereabouts, of residential and commercial premises (831-833 High Road) <i>(Title Number: MX139783)</i>		GF	2015 Masterplan including s105.
87	The Grange Community Hub (32-34 White Hart Lane) <i>(Title Number: NGL32041)</i>	Community use	GF	2015 Masterplan including s105.
97	Access way (access road fronting block (adopted highway)) part of:- <i>(Title Number: MX321986)</i>		GF	2015 Masterplan including s105.
117	Footway, car park (access road (Adopted highway)) part of:- <i>(Title Number: MX321986)</i>		GF	2015 Masterplan including s105.

121	Land and car park adj to (2 -32 (even) Whitehall Street and Ermine House) part of:- <i>(Title Numbers: NGL224482 & MX321986)</i>		GF – access road (Adopted highway)	2015 Masterplan including s105.
136	Residential and commercial premises (731 High Road) <i>(Title Number: MX166584)</i>	Residential and commercial	GF	2015 Masterplan
154	Land (rear of 741 High Road) <i>(Title Number: MX166584)</i>		GF – Acquired with 731 High Rd	2015 Masterplan including s105.
174	Play area and community centre (Grace Day Care Centre and Church, south of 1 to 19 (odd) Penshurst Road) <i>(Title Numbers: NGL56432; NGL34579; MX453543; MX423984; MX402451; MX402317; MX401528; MX355476; MX304795; MX169367 & NGL42495)</i>	Community	GF	2015 Masterplan
175	Part of car park (east of 100 Whitehall Street) part of:-		GF	2015 Masterplan

	<i>(Title Numbers: MX344842; MX284325; MX124184 & MX277962)</i>			
176	Land, footway and residential premises (100 Whitehall Street) <i>(Title Numbers: NGL186; NGL33912; NGL218432; MX269004; MX268151; MX264213; MX226539; MX10788 & NGL224482)</i>		GF	2015 Masterplan including s105.

High Road West Land Ownership Plan





Produced by: Terraquest Solutions Limited
 Floors 7 & 8
 Quayside Tower
 252 - 260 Broad Street
 Birmingham
 B1 2HF

 www.terraquest.co.uk
 0121 234 1300

© Crown copyright. All rights reserved.
 2016 Licence number 100042766

Ver	Date	Comments	Drm	Chk	App

Key plan:

- Private Ownership Parcels
- Council Ownership Parcels
- Unknown Ownership Parcels

Delivered to:

Business Unit: Land Acquisition		Status: Draft	
Approved By AR	Approved Date 19/05/16	Checked By AR	Checked Date 19/05/16
Drawn By GSB		Date Drawn 19/05/16	

Title:
High Road West Land Ownership Plan

Date of Issue: 20/05/16	Project Code: 1704-7762	Scale: 1:1250 @A2
----------------------------	----------------------------	----------------------

Drawing Reference: -	Version: 2.0
-------------------------	-----------------